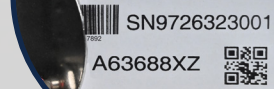


7" COLOR TOUCH SCREEN
WITH COLOR BAR STATUS
INTUITIVE SIMPLE
"LESS IS MORE" MENU
DRIVEN INTERFACE



AUTOMATIC "STAY SHARP"
CARTRIDGE PRINT
MANAGEMENT



SMART PRINTHEAD PROFILE
WITH INNOVATIVE QUICK
AND SECURE HEAD
ANGLE ADJUSTMENT



REMOTE NETWORK
DATA PRINTING
ETHERNET/USB/RS232



FIBER OPTIC PRODUCT SENSOR
AND ANTI SHOCK BRACKET



EVERYTHING YOU NEED
IN ONE PACKAGE



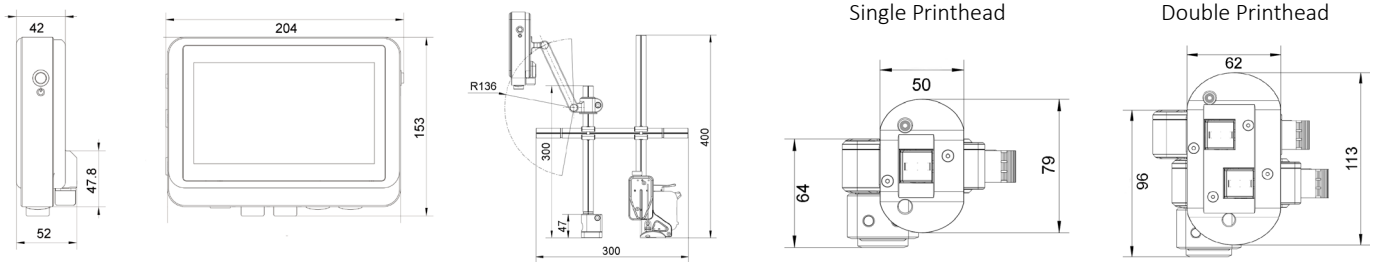
MARKING AND CODING CM 600



MARKING AND CODING WITH CM 600

PRINT CAPABILITY	Print Technology	HP TIJ 2.5
	Printing Parameters	Selectable 150, 200, 300, 600 DPI 12.7mm high print, up to 3000mm long, free design, single printhead, 25.4mm high with two printheads
	Print Distance	1mm optimal, 5mm maximum
	Print Speed	Dependant on selected DPI, up to 152 Mtrs min, 76 Mtrs min 300 DPI
	Print Colors	Standard Black water based. Black, Red, Blue solvent based. Supports other TIJ based speciality inks.
	Printing Options	Configurable time/date codes, counters, shift code, graphics / Logo, external data, symbol sets. Barcodes. EAN13, UPCA, UPCE, Code 39 / 93 / 128, GS1_128, ITF14, PDF417. QR code
	Cartridges Smart Technology	Smart chipped to brand, auto set firing paramiters, auto ink volume
	Special Print Functions	Auto reverse, single trigger multiple print, continuous metre marking
	External Data Handling	100 Mbit Ethernet LAN, RS232 serial data, backup/restore
	Printable Fonts	All Common windows based fonts, including New times Roman, Verdana, Arial, Calibri and Dot matrix fonts
HARDWARE	Controller	7" (78mm) full colour touch screen, Aluminium shell
	Controller Connections	2 printhead data ports, USB 2.0, 9 way D RS232, 9 way D alarms output, RJ11 100Mbit Ethernet LAN, power, encoder, external sensor
	Controller Weight/Dimensions	1.15Kgs. L204mm, W153mm, D52mm
	Printhead Weight/Dimensions	280g. L130mm, W32mm, H93mm, with single guide plate and fitted cartridge
	Printhead Data Cable	Military specification connections, 1.5 Mtrs length standard, 5.0 Mtrs optional
	Mounting Brackets	300mm rotational printhead mounting bar, 2 x 300mm cross section bars, Controller "easy position" bar mounting bracket
External Sensor	Fibre optic sensor with head mounting bracket	
OPERATIONAL CONDITIONS	Maintenance Features	Configurable / selectable auto purge, Print side slection, manual continuous purge selection
	Operation Protection	3 level password system
	Languages	English, traditional Chinese, Vietnamese, Russian, German, Spanish, Portuguese, Dutch, Italian
	Temperature Range	5°C to 45°C, none condensing
	Voltage	100/240v AC, 60W typical. 12v DC, 5A (supplied Power block)
	Printhead Mounting	Auto head 10mm anti shock with 30 deg incremental quick rotational printhead mounting. Side on and top down printing.
Certifications	CE	
IP Rating	IP54 Controller	

DIMENSIONS



**VISIT US ON
WWW.CYKLOP.COM**